



**ALASKA DIVISION OF HOMELAND SECURITY &
EMERGENCY MANAGEMENT**



SITUATION REPORT 22-038 • FEBRUARY 07, 2022

Toll-Free 1.800.478.2337

Anchorage Area 907.428.7000

SEOC 907.428.7100

<p><u>SEOC Preparedness Level</u> Level 2 – Heightened Awareness</p>	<p>http://ready.alaska.gov</p>	<p><u>National Terrorism Advisory System:</u> Read the updated NTAS Bulletin here</p>
<p><u>Maritime Security (MARSEC)</u> Level:1-Minimum Appropriate Security Measures</p>	<p>WHO Novel Coronavirus Pandemic (COVID-19): 2019 Novel Coronavirus</p>	<p><u>Alaska Military Installation Force Protection Level:</u> FPCON Bravo</p>

(Significant changes from previous situation reports are in red.)

Significant Issues:

SEOC at Level 2 – *Heightened Awareness* – Statewide Severe Weather Impacts

The State Emergency Operations Center (SEOC) remains activated in a hybrid virtual/in-person Incident Command structure to manage the current state declared disaster responses and other incidents arising statewide.

Threat Level Changes:

None

State of Alaska Department of Health and Social Services (DHSS)

DHSS is now leading the State of Alaska COVID-19 Recovery through Department Operations, supported by SEOC and other state departments as required.

For current COVID-19 information, see:

<https://covid19.alaska.gov/>

<https://www.cdc.gov/coronavirus/2019-ncov/index.html>

NTAS BULLETIN

To read current or expired advisories, click the link below:

<https://www.dhs.gov/national-terrorism-advisory-system>

Travel Alerts and Conditions

For current driving conditions dial 511 or link to <http://511.alaska.gov/>

Barry Arm Landslide / Tsunami Risk

For the latest information on the Barry Arm Landslide and Tsunami risk, click here: [DGGG Barry Arm Landslide and Tsunami Hazard](#)

Recent Earthquakes

The USGS recorded a M5.2 EQ that occurred 45 miles south of Cantwell. The event was widely felt throughout Southcentral Alaska. The SEOC has not received any reports of damages or issues related to this event.

USGS Earthquake Information: <http://earthquake.usgs.gov/>

National Tsunami Warning Center: <http://tsunami.gov/>

Alaska Volcanoes

Davidof Alert Level: **Advisory** and Aviation Color Code: **Yellow**

Great Sitkin Alert Level: **Watch** and Aviation Color Code: **Orange**

Pavlof Alert Level: **Watch** and Aviation Color Code: **Orange**

Semisopchnoi Alert Level: **Watch** and Aviation Color Code: **Orange**

For Alaska Volcano updates, go to: <https://www.avo.alaska.edu/>

Air Quality Index (AQI) Advisories

For the most up to date Air Quality Index Advisories:

<http://dec.alaska.gov/Applications/Air/airtoolsweb/Home/Index>

Spills of Oil and Hazardous Substances

The ADEC Spill Prevention and Response page is located at:

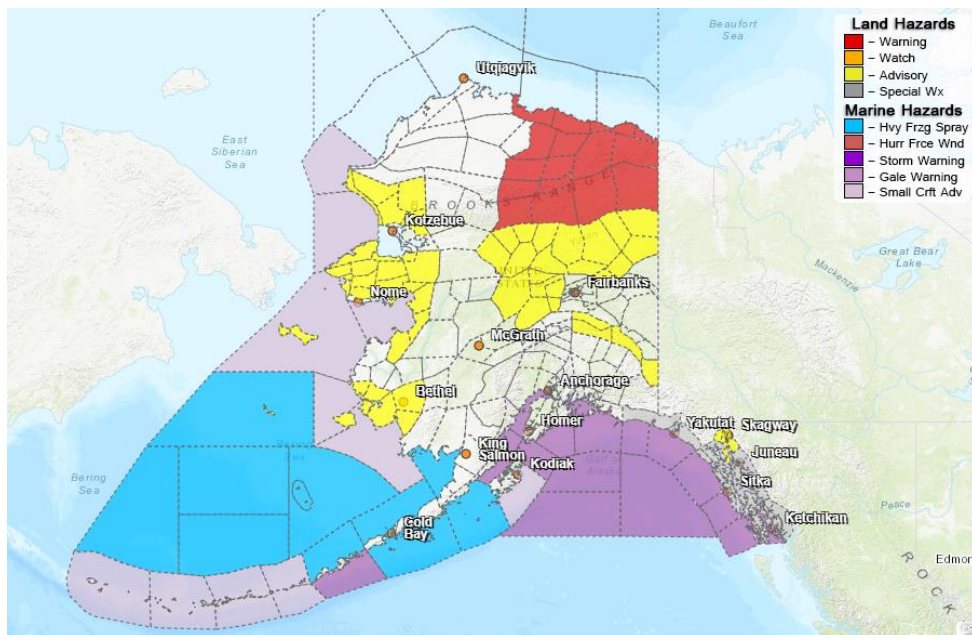
<http://dec.alaska.gov/spar/ppr/spill-information/response/>

Alaska Cyber Security Information

State Employees may sign up for cyber security notifications and alerts at

<https://oit.alaska.gov/security>

Significant Weather:



Wind Chill Warnings have been issued for the following areas:

- Central and Eastern Beaufort Sea Coast – until noon today. Up to -65°F
- Northeastern Brooks Range – until 6:00 A.M. tomorrow. Up to -65°F
- Southeastern Brooks Range – until 6:00 P.M. tomorrow. Up to -65°F

Wind Chill Advisories have been issued for the following areas:

- Eastern Norton Sound, Nulato Hills, and the Northern and Interior Seward Peninsula – until 6:00 A.M. tomorrow. Up to -55°F
- Kuskokwim Delta – until 9:00 A.M. tomorrow. Up to -50°F

Winter Weather Advisories remain in effect for the following areas:

- Haines Borough – until 6:00 P.M. today. 2 to 6 inches of snow mainly along the Haines Highway.
- Skagway and the Klondike Highway – 6:00 P.M. today until 6:00 P.M. tomorrow. 6 to 9 inches of snow.
- Eastern Alaska Range – until 9:00 P.M. today. 6 to 8 inches of snow.
- St. Lawrence Island and the Bering Strait Coast – until 6:00 A.M. tomorrow. Blowing snow and cold wind chills are expected.
- Central Interior, Yukon Flats, and the Upper Koyukuk Valley – until noon Wednesday. Additional snow accumulations of 1 inch are possible with winds gusting to 30mph.

An atmospheric river is expected to move into the panhandle late Tuesday into Thursday. This system will bring a period of moderate to heavy rain to the entire region this week. The precise timing and location of the heaviest precipitation over Southeast Alaska is still vague but it is expected to be a significant rain event.

For more information and the most current weather, Watches / Warnings / Advisories go to: <http://www.weather.gov/arh>.

Avalanche Forecast:



There are areas near Thompson Pass and Valdez with considerable risk, Cordova with moderate risk, and Haines with high risk.

Check the Avalanche Forecast Center closest to your area for the most up to date information on avalanche potential. <https://alaskasnow.org> or <https://www.weather.gov/afc/avalancheweather>

The Next Situation Report: will be 08 February 2022. A significant change in the situation or the threat level will prompt an interim report.

This report is posted on the internet at <https://ready.alaska.gov/sitrep>. To register for email distribution, go to <http://list.state.ak.us/mailman/listinfo/dhsem.situation.report>. Direct questions regarding this report to the SEOC at 907-428-7100 or seoc@alaska.gov